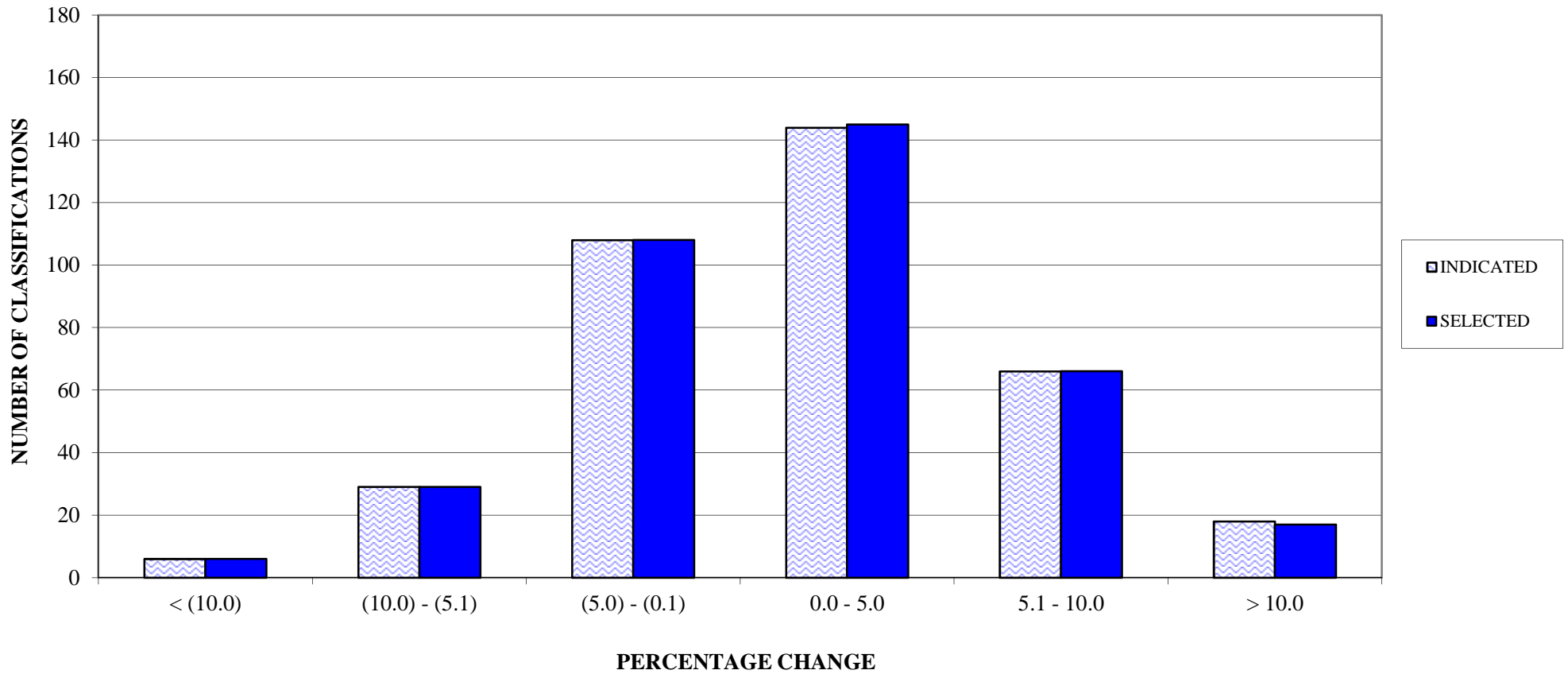


PENNSYLVANIA COMPENSATION RATING BUREAU

Distribution of Loss Cost % Changes

These percent changes are based on pre-surcharge loss costs.

**PENNSYLVANIA COMPENSATION RATING BUREAU**  
**APRIL 1, 2018**  
**LOSS COST FILING**  
**DISTRIBUTION OF LOSS COST PERCENTAGE CHANGES (PRE-SURCHARGE)**



## CLASSES CAPPED AT UPPER BOUND

CLASS	PRE-CAPPED % CHANGE	POST-CAPPED % CHANGE
962	66.7%	0.0%
970	44.8%	26.2%