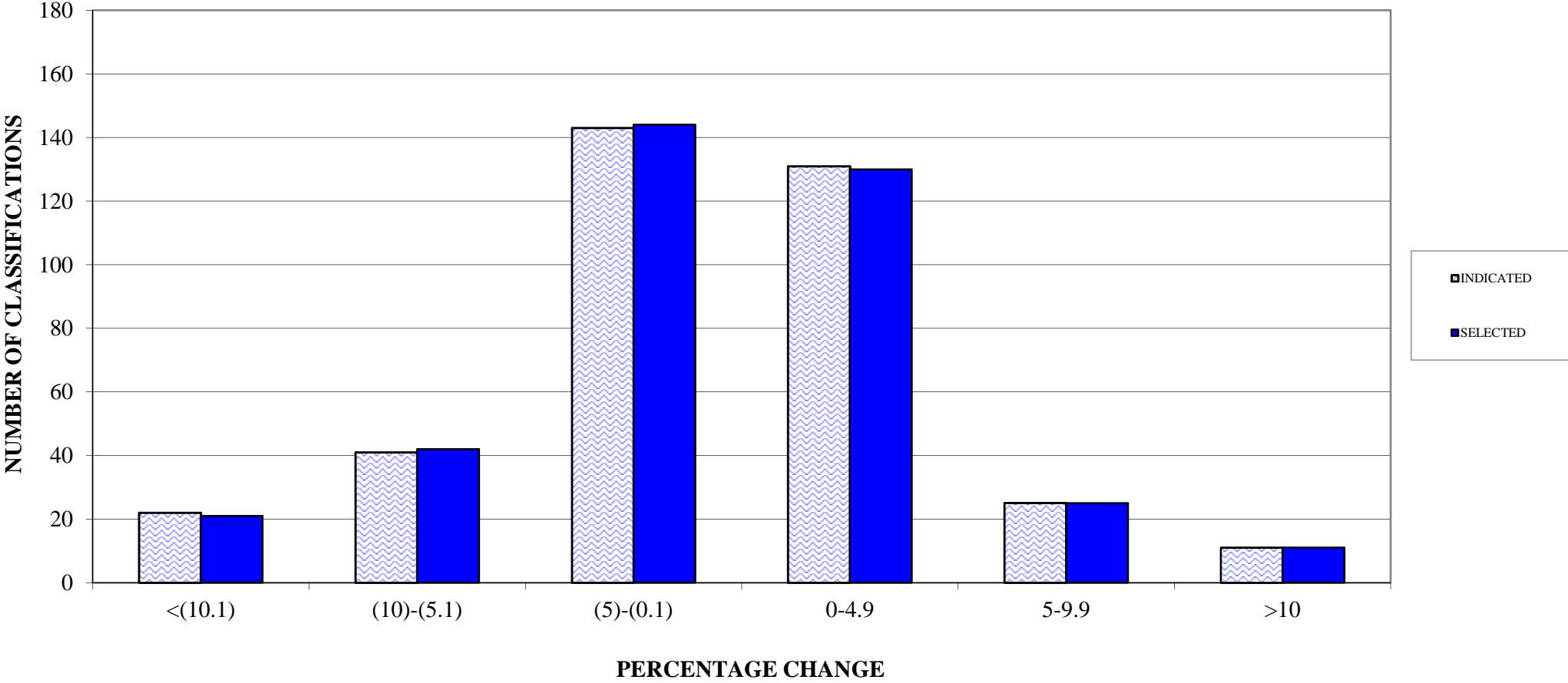


PENNSYLVANIA COMPENSATION RATING BUREAU

Distribution of Loss Cost % Changes

These percent changes are based on pre-surcharge loss costs.

PENNSYLVANIA COMPENSATION RATING BUREAU
APRIL 1, 2016 LOSS COST FILING
DISTRIBUTION OF LOSS COST PERCENTAGE CHANGES (PRE-SURCHARGE)



CLASSES CAPPED AT LOWER BOUND

CLASS	PRE-CAPPED % CHANGE	POST-CAPPED % CHANGE
522	-9.8%	-13.5%
889	-26.5%	-23.5%
956	-15.4%	-7.7%

CLASSES CAPPED AT UPPER BOUND

CLASS	PRE-CAPPED % CHANGE	POST-CAPPED % CHANGE
0162	25.0%	22.5%