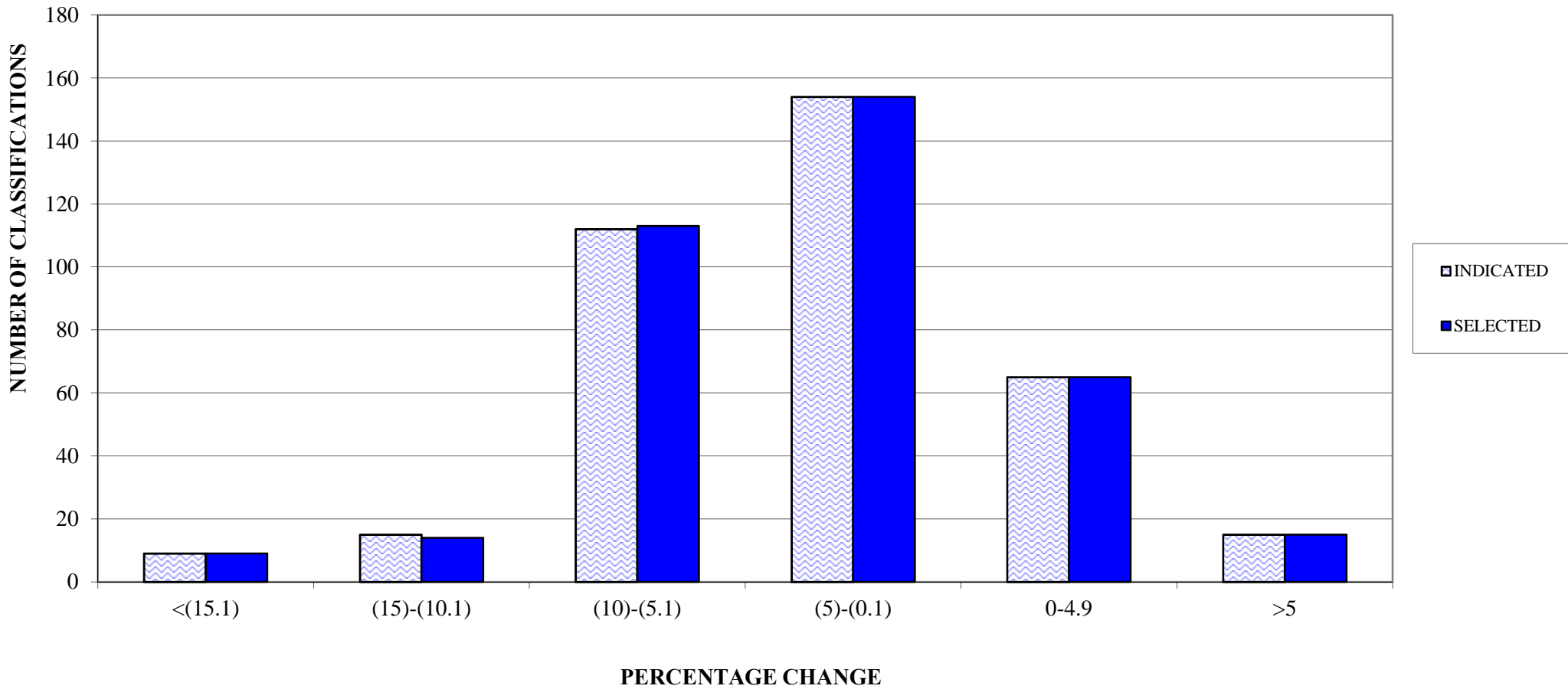


PENNSYLVANIA COMPENSATION RATING BUREAU

Distribution of Loss Cost % Changes

These percent changes are based on pre-surcharge loss costs.

PENNSYLVANIA COMPENSATION RATING BUREAU
APRIL 1, 2013 LOSS COST FILING
DISTRIBUTION OF LOSS COST PERCENTAGE CHANGES (PRE-SURCHARGE)



CLASSES CAPPED AT LOWER BOUND

CLASS	PRE-CAPPED % CHANGE	POST-CAPPED % CHANGE
520	12.2%	-8.2%
993	7.7%	-13.2%
996	7.7%	-13.2%

CLASSES CAPPED AT UPPER BOUND

CLASS	PRE-CAPPED % CHANGE	POST-CAPPED % CHANGE
905	-38.7%	-29.0%
956	-11.8%	5.9%